



NAMBU CAMP

IMPORTANT:

The nearest airport is Eastgate which is a short 45- minute drive away, making it easily accessible for fly- in guests.

While many might choose to self-drive from Johannesburg, which is a scenic 5-hour drive away.

FROM NELSPRUIT

- From Mbombel (Nelspruit) proceed in the direction of White River on the R537.
- After White River take the R40 to Hazyview. Follow this road until you reach a T-junction.
- Turn left at the T-junction (you are still on the R40), drive through Hazyview.
- At the four-way stop continue straight on the R40 past Bosbokrand (Bushbuck Ridge) and Acornhoek.
- After Acornhoek the R40 will continue northwards towards Hoedspruit / Phalaborwa.
- Entering Hoedspruit, follow the R40 to Phalaborwa.
- Travel 16.2 kilometres on the R40 to reach the Balule/Olifant's West Gate on your right. Turn right into the Balule boom gate.
- Please do not use GPS from this point onwards.
- The gate guard will ask your destination: Nambu Camp. You will be asked to fill in a visitor's permit and to make the gate and conservation levy payment
- Directly after the entrance gate, take a sharp left and drive along the fence for 890m. Keep right once you get to a road named Maroela Laan.
- Continue along this road for 5.7km until you get to a T-junction.
- Take a left, then an immediate right where you will see the Nambu Camp sign.
- Continue on this road for a short 40m and turn right up a slight incline for 80m
- Take a left and follow a rocky road for 610m and you will reach the entrance to Nambu Camp.

FROM HOEDSPRUIT

- Leaving the town of Hoedspruit, take the R40 towards Phalaborwa
- Travel 16.2 kilometers on the R40 to reach the Balule/Olifant's West Gate on your right. Turn right into the Balule boom gate.
- **Please do not use GPS from this point onwards.**
- The gate guard will ask your destination: Nambu Camp. You will be asked to fill in a visitor's permit and to make the gate and conservation levy payment
- Directly after the entrance gate, take a sharp left and drive along the fence for 890m. Keep right once you get to a road named Maroela Laan.
- Continue along this road for 5.7km until you get to a T junction.
- Take a left, then an immediate right where you will see the Nambu Camp sign.
- Continue on this road for a short 40m and turn right up a slight incline for 80m
- Take a left and follow a rocky road for 610m and you will reach the entrance to Nambu Camp.

FEES PAYABLE

- Olifants West Nature Reserve vehicle entry fee: Payable per vehicle per entry (Please check rate sheets) This fee is collected in cash, Mastercard or Visa at the Gate on arrival.
- Olifants West Nature Reserve per person entry fee: Payable per person per entry (Please check rate sheets) This fee is collected in cash, Mastercard or Visa at the Gate on arrival.
- Nambu Conservation levy: Payable per person per night from the second night, usually added to your invoice for prepayment unless otherwise arranged with our reservations team (please check rate sheets).



RESERVATIONS

E: reservations@sundestinations.co.za

T: + 27 21 203 5173

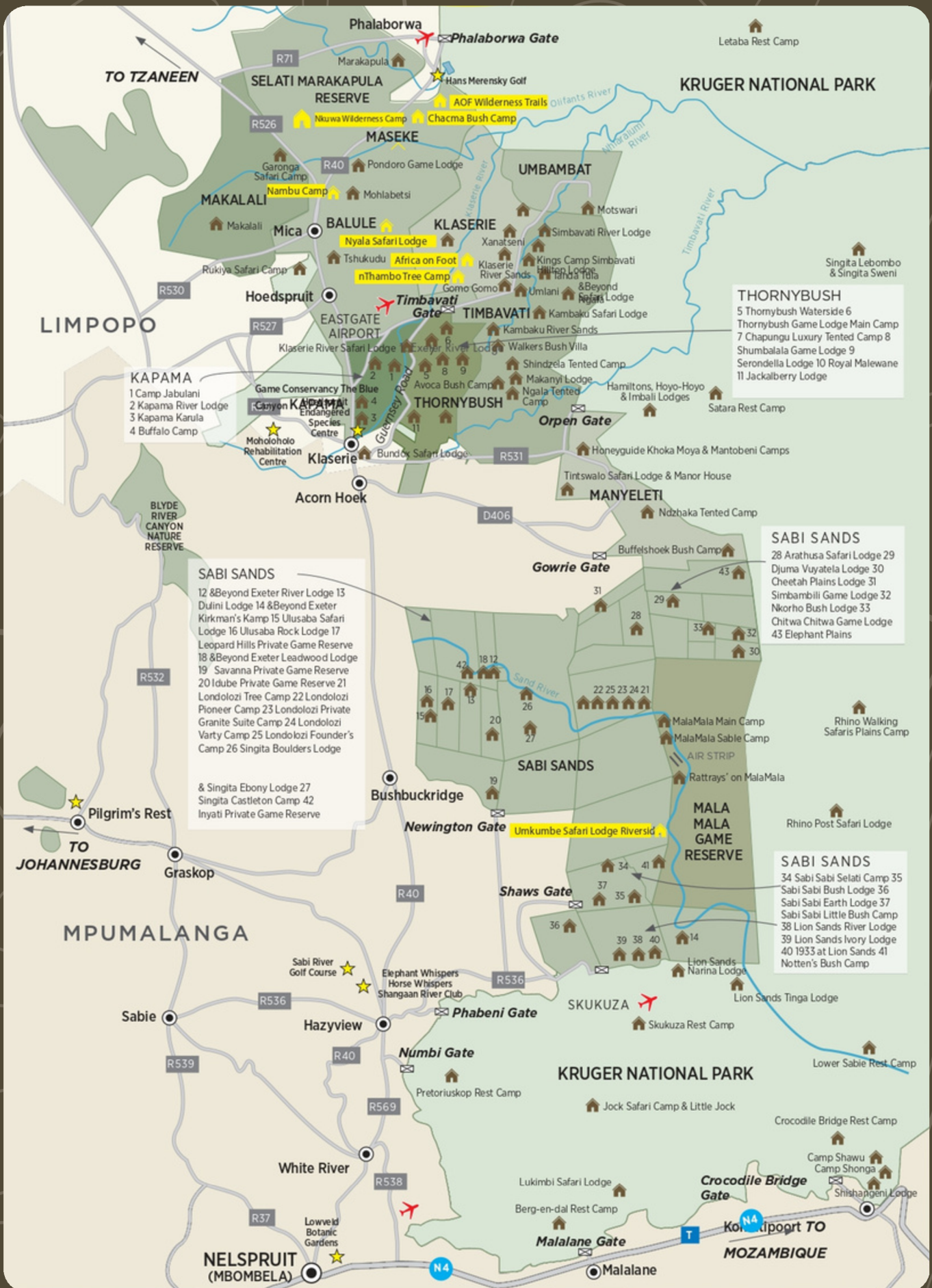
W: www.sundestinations.co.za

MARKETING

E: mallory@sundestinations.co.za

T: +27 21 203 5173

W: www.nambucamp.com



KAPAMA
 1 Camp Jabulani
 2 Kapama River Lodge
 3 Kapama Karula
 4 Buffalo Camp

SABI SANDS
 12 & Beyond Exeter River Lodge 13
 Dulini Lodge 14 & Beyond Exeter
 Kirkman's Kamp 15 Utusaba Safari
 Lodge 16 Utusaba Rock Lodge 17
 Leopard Hills Private Game Reserve
 18 & Beyond Exeter Leadwood Lodge
 19 Savanna Private Game Reserve
 20 Idube Private Game Reserve 21
 Londolozzi Tree Camp 22 Londolozzi
 Pioneer Camp 23 Londolozzi Private
 Granite Suite Camp 24 Londolozzi
 Varty Camp 25 Londolozzi Founder's
 Camp 26 Singita Boulders Lodge
 & Singita Ebony Lodge 27
 Singita Castle on Camp 42
 Inyati Private Game Reserve

THORNYBUSH
 5 Thornybush Waterside 6
 Thornybush Game Lodge Main Camp
 7 Chapungu Luxury Tented Camp 8
 Shumbalala Game Lodge 9
 Serondella Lodge 10 Royal Malewane
 11 Jackalberry Lodge

SABI SANDS
 28 Arathusa Safari Lodge 29
 Djuma Vuyatela Lodge 30
 Cheetah Plains Lodge 31
 Simbambili Game Lodge 32
 Nkorho Bush Lodge 33
 Chitwa Chitwa Game Lodge
 43 Elephant Plains

SABI SANDS
 34 Sabi Sabi Selati Camp 35
 Sabi Sabi Bush Lodge 36
 Sabi Sabi Earth Lodge 37
 Sabi Sabi Little Bush Camp
 38 Lion Sands River Lodge
 39 Lion Sands Ivory Lodge
 40 1933 at Lion Sands 41
 Notten's Bush Camp